

FRELAN



HARDWARE

THE NAME OF QUALITY  
ARCHITECTURAL  
HARDWARE

**FITTING INSTRUCTIONS**



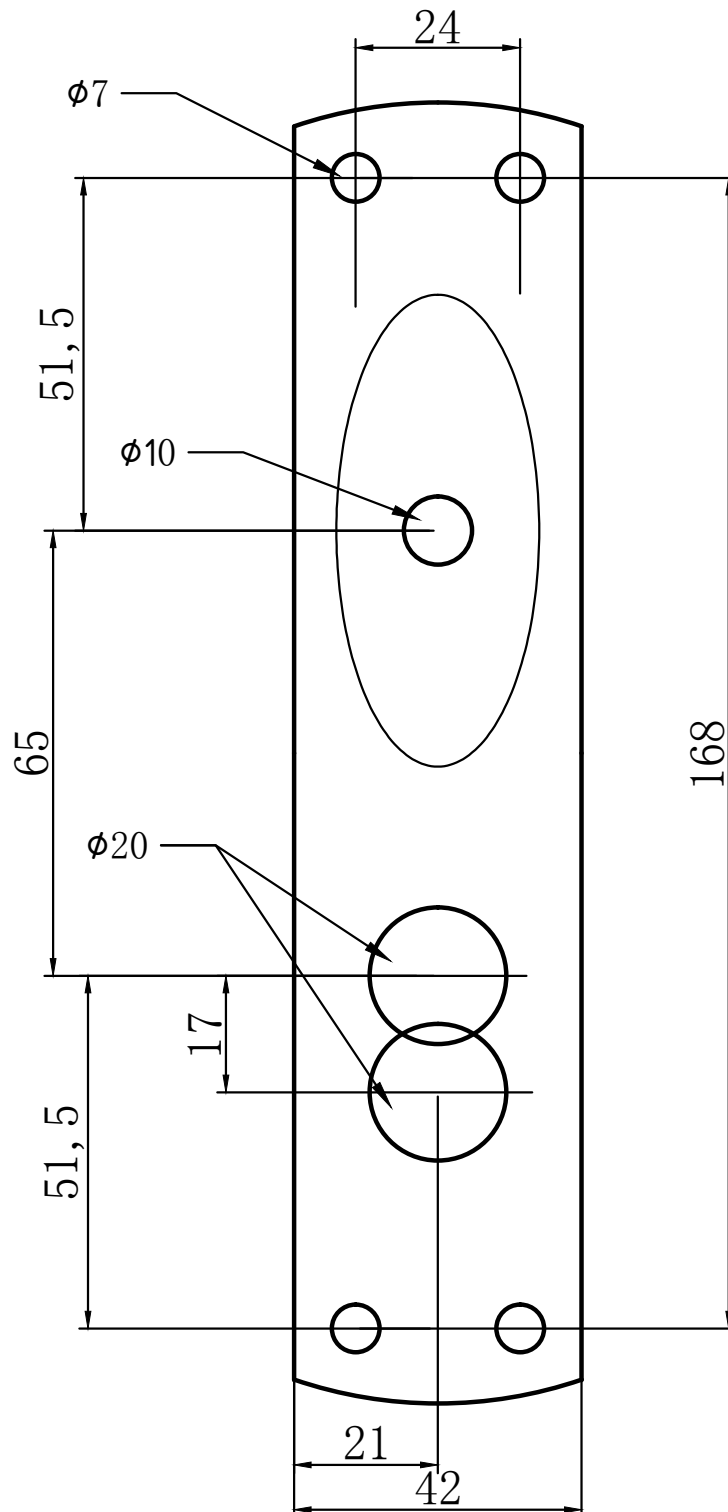
**ESPAGNOLETTE BOLT JV2000**

[www.frelan.co.uk](http://www.frelan.co.uk)

## Fitting instructions

# Espagnolette Bolt JV2000

Place handle Template in desired position (normally between 950-1000mm from floor).  
 Ensuring it is straight, mark and drill holes as illustrated



## Standard Inward opening fixing detail for Espagnolette Bolt JV2000

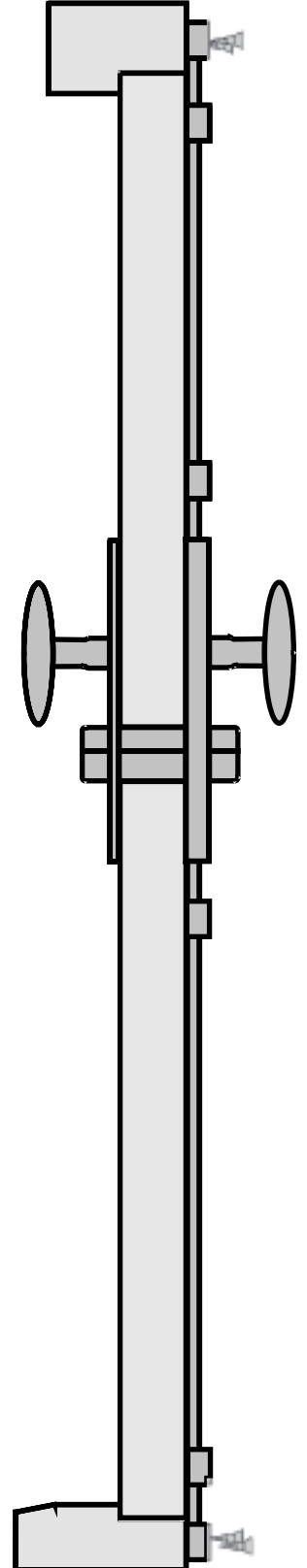
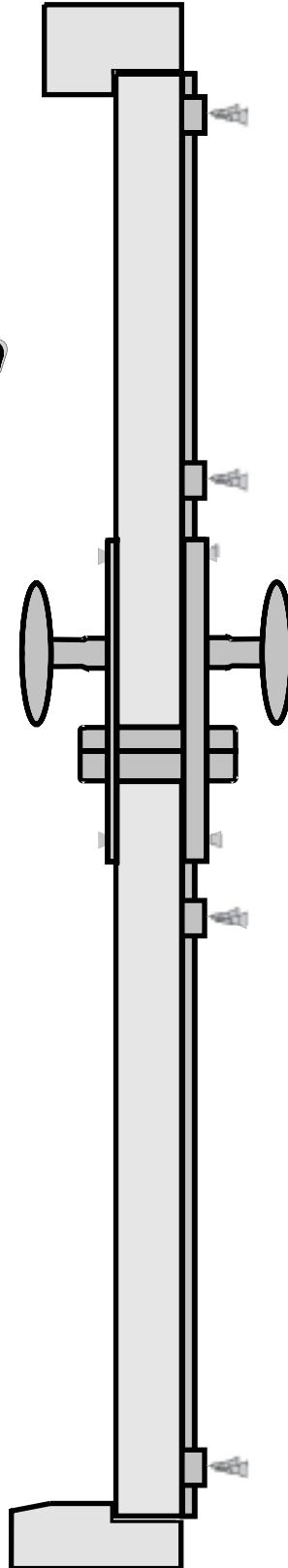
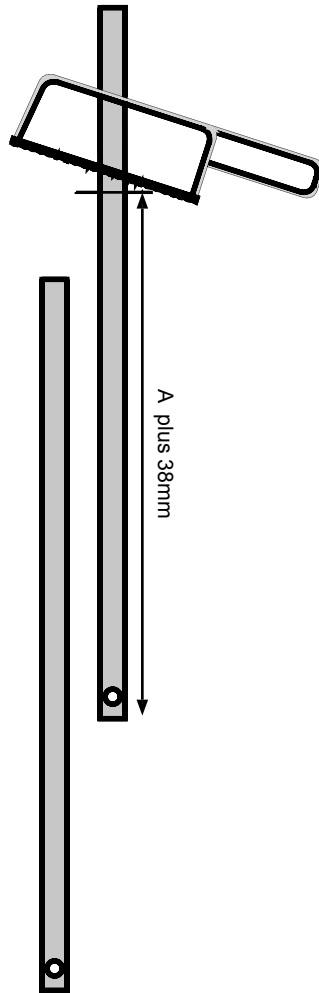
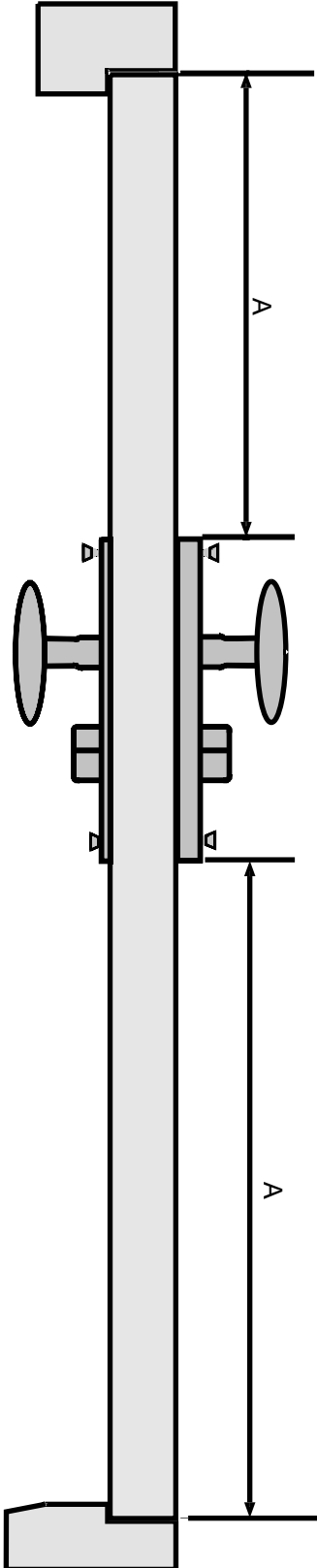
1  
Attach handles to door in desired position, measure distance between top & bottom of handle and edge of door.

2  
Adding 38mm to the measurement, cut bars to length.

PLEASE NOTE  
If gap between door and frame exceeds 10mm the above measurement should be increased accordingly.  
Max bolt throw is 18mm

3  
loosen handle, connect bars to mechanism using the hole in the bar, tighten handle and ensuring bars are straight attach guides.

4  
Throw the bolt by turning the oval knob, attach top & bottom keeps.



## Standard outward opening fixing detail for Espagnolette Bolt JV2000

1

Attach handle to door in desired position, measure distance between top & bottom of handle and edge of door.

2

Adding 37mm to the measurement, cut bars to length.

3

loosen handle, connect bars to mechanism using the hole in the bar, refix handle and ensuring bars are straight attach guides .  
Mark around the top & bottom of bars to determine hole position

4

Position the strike plate centrally over the marked position ensuring the aperture is level to the bottom edge of the line.  
Mark position and form hole at least 18mm deep, fix plate.

Please note:  
If you are using the angled plate this will need to be recessed flush to the edge of the frame.

